

A PLAT OF TOWNHOMES OF STUART

BEING A REPLAT OF CROSS CREEK, AS RECORDED IN PLAT BOOK 12,
PAGE 34, PUBLIC RECORDS OF MARTIN COUNTY, FLORIDA AND LYING IN
SECTION 9, TOWNSHIP 38 SOUTH, RANGE 41 EAST, CITY OF STUART,
MARTIN COUNTY, FLORIDA.

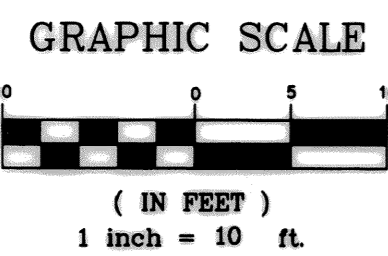
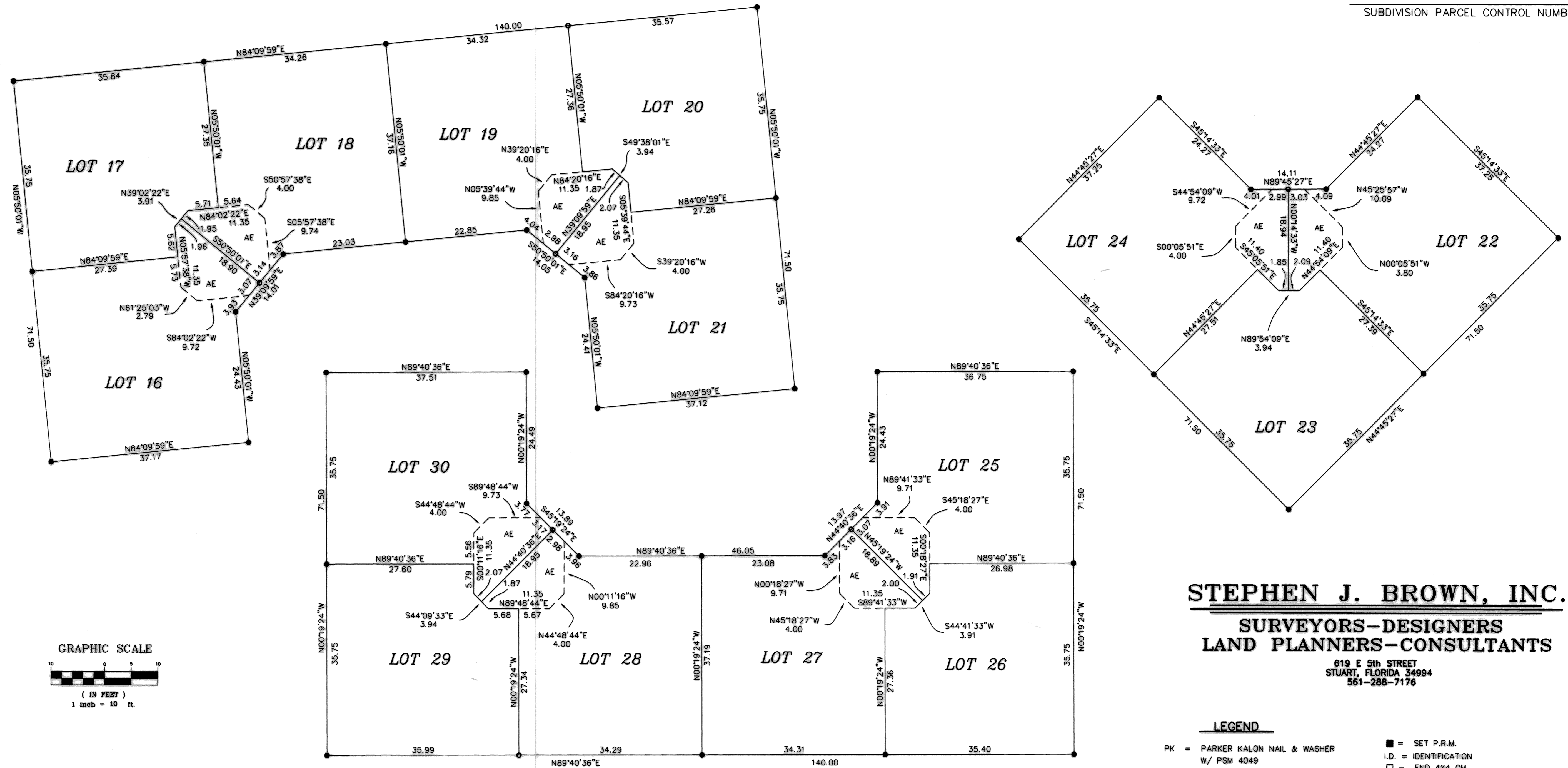
CLERK'S RECORDING CERTIFICATE

I, Marsha Ewing, Clerk of the Circuit Court of Martin County, Florida, hereby certify that this plat was filed for record in Plat Book 15, Page 27, Martin County, Florida, public records, this 9th day of June, 2004.

Marsha Ewing
Circuit Court
Martin County, Florida
BY: Charlotte Dinkley
Deputy Clerk
(Circuit Court Seal)

File No. 125244

SUBDIVISION PARCEL CONTROL NUMBER



NOTES

1. THIS PLAT, AS RECORDED IN ITS ORIGINAL FORM IN THE PUBLIC RECORDS, IS THE OFFICIAL DEPICTION OF THE SUBDIVIDED LANDS DESCRIBED HEREON AND WILL IN NO CIRCUMSTANCES BE SUPPLANTED IN AUTHORITY BY ANY OTHER FORM OF THE PLAT, WHETHER GRAPHIC OR DIGITAL.
2. THERE MAY BE ADDITIONAL RESTRICTIONS THAT ARE NOT RECORDED ON THIS PLAT THAT MAY BE FOUND IN THE PUBLIC RECORDS OF THIS COUNTY.
3. THE SURVEY BEARINGS SHOWN HEREON ARE REFERENCED TO THE EASTERLY RIGHT-OF-WAY LINE OF S. KANNER HIGHWAY, PLATTED AS NORTH 00°36'55" WEST, ALL OTHERS RELATIVE THERETO.
4. THE NATIONAL FLOOD INSURANCE PROGRAM DESIGNATION AS INDICATED ON THE F.E.M.A. MAP PANEL NO. 12085C 0142F, DATED 10/04/2002, LOCATES THE PARCEL IN ZONE "X", MINIMUM ELEVATION = N/A

STEPHEN J. BROWN, INC.
SURVEYORS-DESIGNERS
LAND PLANNERS-CONSULTANTS
619 E 5th STREET
STUART, FLORIDA 34994
561-288-7176

LEGEND

- | | |
|---|--|
| PK = PARKER KALON NAIL & WASHER
W/ PSM 4049 | ■ = SET P.R.M. |
| CM = CONCRETE MONUMENT | I.D. = IDENTIFICATION |
| P.R.M. = PERMANENT REFERENCE MONUMENT
4X4 CM WITH DISK, PRM PSM 4049 | □ = FND 4X4 CM |
| O.R.BOOK = OFFICIAL RECORD BOOK | W/ = WITH |
| PG = PAGE | P.O.B. = POINT OF BEGINNING |
| ● = SET 5/8" IRON BAR & CAP
LABELED "S. J. BROWN PSM 4049" | P.O.C. = POINT OF COMMENCEMENT |
| CA = COMMON AREA | ⊙ = CENTERLINE |
| P.B. = PLAT BOOK | ⊘ = DIAMETER |
| PG = PAGE | ○ = SET PK |
| AE = ACCESS EASEMENT | * = CANNOT BE SET DUE TO
PHYSICAL OBSTRUCTION
(BUILDING WALLS) |